



Holden Road, Woodside Park, N12 7AG

Guide Price £575,000 Leasehold

Council Tax Band F

REAL ESTATES
Est. 1981

Estate Agents · Residential Sales · Investments · Lettings

Real Estates are delighted to offer for sale this beautifully presented 2 BEDROOM 1 BATHROOM FIRST FLOOR flat with a spacious PRIVATE BALCONY set in a modern development of just 34 exquisitely finished apartments built approximately 5 years ago.

Benefitting from SECURE UNDERGROUND PARKING, excellent transport links, great local amenities and nearby green spaces, The Westbury offers the very best of urban and rural living.

The apartment is well equipped with a high specification Poggenpohl kitchen, included integrated appliances, fitted cupboards to both bedrooms and entrance hall, underfloor heating throughout, and a pre-wired modern entertainment system.

Situated within easy reach of WOODSIDE PARK NORTHERN LINE STATION, various bus routes, the Dollis Valley Greenwalk plus the popular coffee shops on Sussex Ring and the bustling North Finchley High Road.

LEASE 144 YEARS REMAINING

GROUND RENT £350 PA

SERVICE CHARGE £2,838.92 PA

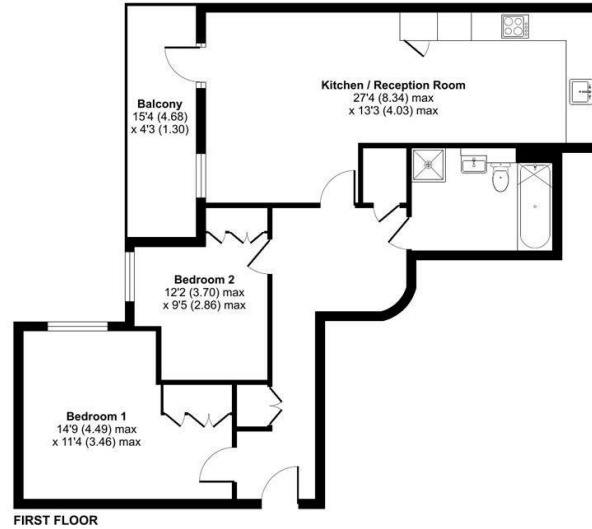






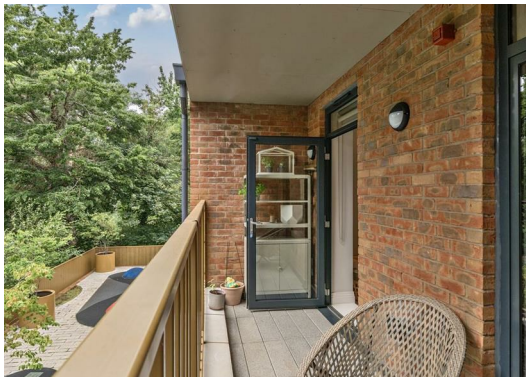
Holden Road, London, N12

Approximate Area = 786 sq ft / 73 sq m
For identification only - Not to scale



Floor plan produced in accordance with RICS Property Measurement 2nd Edition, incorporating International Property Measurement Standards (IPMS2 Residential). © richcom 2025. Produced for Real Estates. REF: 1313794

Energy Efficiency Rating		Current	Potential
Very energy efficient - lower running costs			
A	(91-100)	85	85
B	(81-90)		
C	(71-80)		
D	(61-70)		
E	(51-60)		
F	(41-50)		
G	(31-40)		
Not energy efficient - higher running costs			
EU Directive			



Real Estates Woodside Park Office:
14/14a Sussex Ring
Woodside Park N12 7HX

ll : 020 8445 6387
e : info@realestates-wsp.co.uk
w : www.realestates-wsp.co.uk